

PCH GMP-1000



APPLICATIONS

- Bridge Deck Coatings
- Parking Deck Coatings
- Highway Repair
- Parking Structures
- Waterproofing
- Concrete Restoration
- Floor Coatings

MATERIALS

- Polyureas
- Unfilled Urethanes
- Unfilled Epoxies

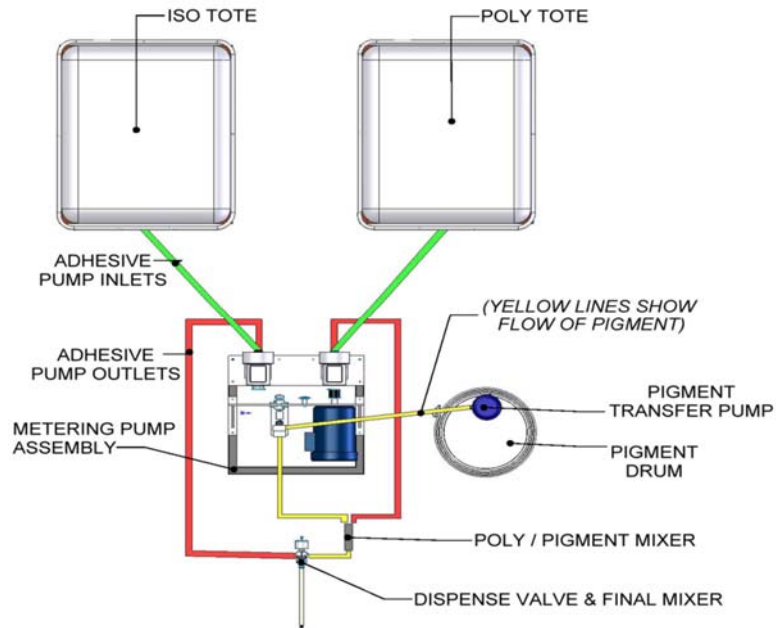
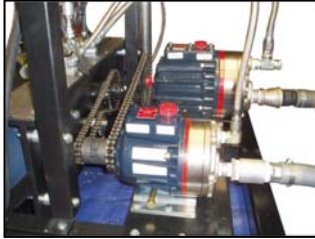
FEATURES & BENEFITS

- Portable
- Reliable, rugged design
- Easy to operate and maintain
- Electric/pneumatic powered
- Changeable ratio
- Various feed systems available
- 10 HP drive motor
- Optional manifold & head applicators
- Ratio & pressure monitoring, data recording & heavy duty frame optional
- Pumps non-abrasive materials
- Backed by AST warranty
- Variable flow rate
- Uses AST GDP metering pump
- Continuous flow up to 10.0 gpm
- Fluid pressures up to 1,000 psi
- Viscosities up to 5,000 cps
- Ratios of 1:1 to 4:1



PCH GMP-1000

PRODUCT SPECIFICATIONS



MODEL	PCH GMP-1000	FRAME	3" powder coated tubular steel
MACHINE TYPE	Changeable ratio/metering/ dispensing; GMP gear	CONTINUOUS OUTPUT	Up to 10 gallons per minute
RATIO RANGE	1:1 to 4:1	VISCOSITY RANGE	100 CPS to 4,000 CPS
GAUGES	(2) glycerin filled, 800 psi	AIR DRYER	Desiccant cartridge
STANDARD CONTROLS	On/Off; variable speed	SERVICES REQUIRED	5 HP, 240 V. / 15 AH, 30 AMP 90 psi, 2 cfm
CONTAINERS	Transfer pumps from totes or 55-gallon drums	APPLICATORS	AST hand held; manual dual port manifold
METERING PUMPS	(2) heavy duty AST GMP™	MIXER	Disposable, plastic, motionless
MOTOR	5 HP; 240, 1 phase 7.5 & 10 HP; 240/480, 3 phase	HOSES	High pressure, nylon or Teflon core
DIMENSIONS	STANDARD: 36" L x 36" W x 42" H 300 lbs. HEAVY DUTY FRAME: 48" L x 48" W x 50" H; 300 lbs.	OPTIONS	<ul style="list-style-type: none"> ➤ Heated tanks; feed systems ➤ Hydraulic drive ➤ Spray & purge ➤ 5, 7.5, or 10 HP motor size

ADHESIVE SYSTEMS TECHNOLOGY CORP.

1600 FREEWAY BLVD • BROOKLYN CENTER, MN 55430

Phone: 763-592-2060 • WWW.AST-CORP.NET