



**ADHESIVE SYSTEMS
TECHNOLOGY CORP**

**METER-MIX DISPENSE
EQUIPMENT**

PCH GMP-1000



APPLICATIONS

- Bridge Deck Coatings
- Parking Deck Coatings
- Highway Repair
- Parking Structures
- Waterproofing
- Concrete Restoration
- Floor Coatings

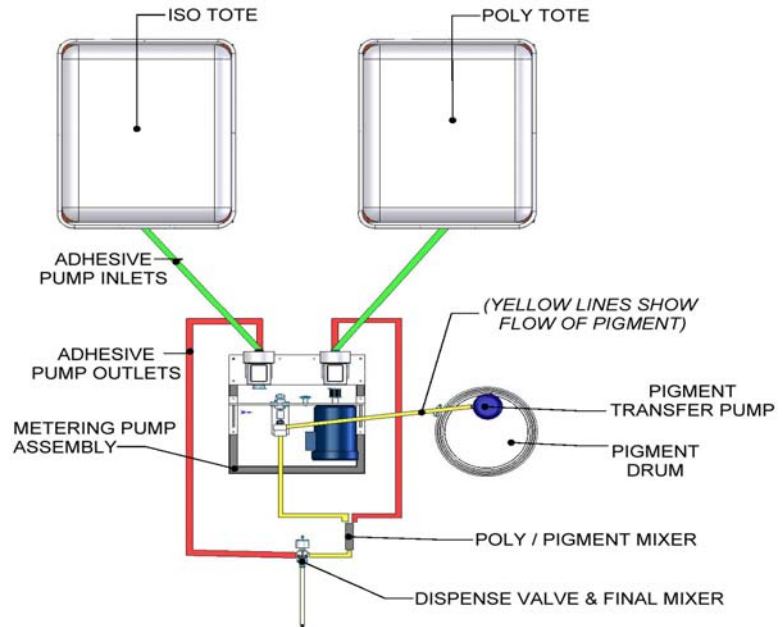
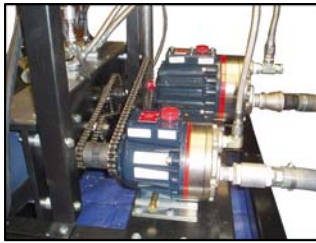
MATERIALS

- Unfilled Urethanes
- Unfilled Epoxies
- Polyureas

FEATURES AND BENEFITS

- Portable
- Reliable, rugged design
- Easy to operate and maintain
- Electric/pneumatic powered
- Changeable ratio
- Various feed systems available
- 5 HP drive motor
- Optional manifold & head applicators
- Ratio & pressure monitoring, data recording & heavy duty frame optional
- Pumps non-abrasive materials
- Backed by AST warranty
- Variable flow rate
- Uses AST GDP metering pump
- Continuous flow up to 10.0 gpm
- Fluid pressures up to 1,000 psi
- Viscosities up to 4,000 cps
- Ratios of 1:1 to 4:1

PRODUCT SPECIFICATIONS



MODEL	PCH GMP-1000	FRAME	3" powder coated tubular steel
MACHINE TYPE	Changeable ratio/metering/ dispensing GMP gear	AIR DRYER	Desiccant cartridge
CONTINUOUS OUTPUT	Up to 10 gallons per minute	GAUGES	(2) glycerin filled 600 psi
RATIO RANGE	1:1 to 4:1	STANDARD CONTROLS	On/Off; variable speed
VISCOSITY RANGE	100 CPS to 4,000 CPS	SERVICES REQUIRED	5 HP, 240 V. / 15 AH, 30 AMP 90 psi, 2 cfm
MOTOR	5 HP: 240, 1 phase 7.5 & 10 HP: 240/480, 3 phase	APPLICATORS	AST hand held; manual dual port manifold
METERING PUMPS	(2) heavy duty AST GDP™	MIXER	Disposable, plastic, motionless
DIMENSIONS	STANDARD: 36" L x 36" W x 42" H 300 lbs. HEAVY DUTY FRAME w/ Lift Rings & Forklift Openings: 48" L x 48" W x 50" H 300 lbs.	HOSES	High pressure, nylon or Teflon core
		OPTIONS	Heated tanks; feed systems Hydraulic drive Spray Purge Manifolds 5, 7.5 or 10 HP motor size

ADHESIVE SYSTEMS TECHNOLOGY CORP.
9000 Science Center Drive, New Hope, MN 55428
Phone: 763-592-2060 • Fax: 763-592-2075
www.ast-corp.net • ast@ast-corp.net