



METERING & DISPENSING EQUIPMENT FOR BRIDGES & HIGHWAYS

- Simple & Reliable
- Engineered Systems
- PLC Compatible
- Bridge Deck Overlays
- Dowel Bar Applications
- Crack Sealing
- Joint Sealing
- Traffic Loop Sealing
- Pavement Marker Adhesion

POSITIVE DISPLACEMENT METER-MIX & DISPENSE EQUIPMENT

GMP-500

Metering, Mixing & Dispensing of Two-Component Polyureas, Unfilled Urethanes & Unfilled Epoxies



- Uses AST GMP metering pump
- Continuous flow up to 5 gpm
- Fluid pressures up to 1,000 psi
- Viscosities up to 5,000 cps
- Fixed Ratios of 1:1 to 4:1
- Variable flow rate
- 9 gallon stainless steel tanks
- 5 HP DC drive motor
- Automatic dispense manifold
- Electric/pneumatic powered
- Pumps non-abrasive materials
- Optional spray head

GMP-025

Joint Filling, Concrete Restoration, Small Spall Repair, Anchoring & Small Joint Sealing Using Non-Filled Urethanes, Epoxies, Silicones and Polyureas



- AST GMP metering pump
- Continuous flow up to .3 gpm
- Fluid pressures up to 750 psi
- Viscosities up to 5,000 cps
- Fixed Ratios of 1:1 to 4:1
- ¼ HP drive motor
- 4.5 gallon stainless steel tanks
- Electric powered
- Handles non-abrasive materials
- Manual dispense manifold

RMP-624 BRUTE

Metering & Dispensing of Two Component Filled & Unfilled Epoxies, Urethanes,



- Uses AST RMP metering pump
- Continuous flow up to .8 gpm
- Fluid pressures up to 2,000 psi
- Viscosities up to 500,000 cps
- Fixed Ratios of 1:1, 2:1, 4:1
- Adjustable flow rate
- 8.5 gallon stainless steel tanks
- 6" or 8" diameter drive cylinder
- Automatic dispense valve
- Pneumatic powered
- Up to 20 cycles per minute
- Metered shots or continuous flow
- Pumps abrasive materials

PCV SP-55

Sealing & Caulking of One-Component Silicones, Fire Stop, & Urethanes

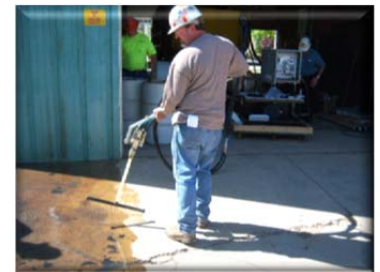


- Uses AST CMP metering pump
- Continuous flow up to 4 gpm
- Fluid pressures up to 3000 psi
- Viscosities up to 1,000,000 cps
- Optional pneumatic elevator
- 5:1 to 30:1 power factor ratio
- Adjustable flow rate
- 55 gallon drum feed with follower plate
- High pressure/self-priming
- 6", 8" or 10" diameter drive cylinder
- Pneumatic powered
- Metered shots or continuous flow
- 3" diameter double post pneumatic ram
- Pumps abrasive materials



AST engineers, manufactures, integrates and installs complete dispensing line processes for your application. We will provide a total solution for your manufacturing process.

Data Recovery Options Available for Process Verification and Quality Assurance.



AST Provides Custom Designed Meter, Mix & Dispense Systems In Addition To the Standard Product Line



AST ADHESIVE SYSTEMS TECHNOLOGY CORP

9000 Science Center Drive, New Hope, MN 55428
Phone: 763-592-2060 • Fax: 763-592-2075
www.ast-corp.net • ast@ast-corp.net